

PAINTLINE™ Inverted Conveyor



90° Track Curve

quires.



2'-7" Min
4'-1" Max
3'-7" Max



Add str
between
as syste
layout re



PAINTLINE™ INVERTED ZIG-ZAG

Richards-Wilcox Inverted PaintLine™ Conveyor Systems combine reliable, clean conveyor operation with the vertical flexibility made possible only through the unique design of Richards-Wilcox Inverted Pendants.

Unlike a rigid pendant, the investment cast Inverted Pendant pivots forward and backward on the wheel axle to allow free rotation up to 30° with no torque or wear on the chain assembly. The Inverted Conveyor system is ideal in production environments where clean operation is essential.

PaintLine™ is supplied with a one-piece removable pendant for easy maintenance, replacement, and configuration.

Because of its design the need for drip pans is eliminated.

PaintLine™ uses standard Zig-Zag chain and track with slightly modified drives, curves, inspection sections, pendants, lubricators, and take-ups to allow for inverted operation.

TYPICAL INVERTED APPLICATIONS

- Paint and Varnish Applications
- Electronics Manufacturing
- Pin Systems
- Pan Conveyors
- Kitting Assembly
- Tote Conveyors
- Package Handling



PAINTLINE™ INVERTED ZIG-ZAG



2035.02817 INVERTED HOOK ASSEMBLY

- 25 lb. load capacity
- Designed to keep carrier plumb when loaded
- Easier to attach and remove from inverted pendant
- No tools needed

2035.02817 Inverted Hook Assembly



2035.02818 INVERTED HOOK ASSEMBLY

- 75 lb. load capacity
- Designed to keep carrier plumb when loaded
- Easier to attach and remove from inverted pendant
- No tools needed

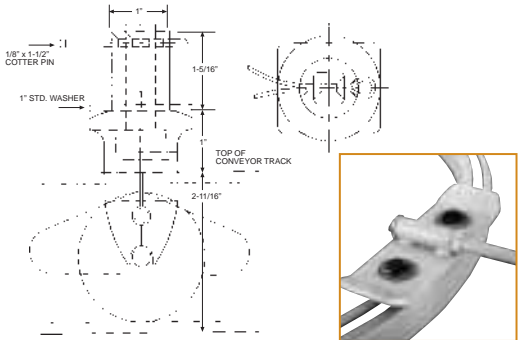
2035.02818 Inverted Hook Assembly



2035.02091 INVERTED PENDANT

- 30° Free Rotation on inclines and declines
- No excessive wear and torque to chain like other inverted pendants
- Easy to remove for reconfiguration
- C-hook mounts easily — no tools

2035.02091 Inverted Pendant

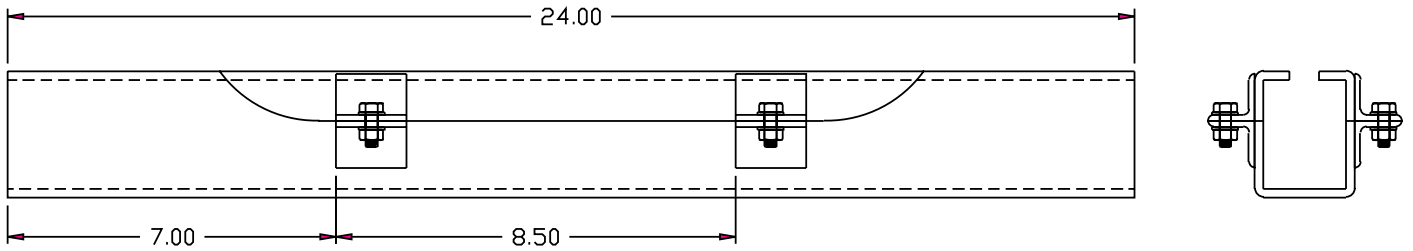


2035.01220 INVERTED PENDANT

- 45° Free Rotation on inclines and declines
- 125 lb. Capacity (when used with inverted shoe pictured at left)
- More resistant to wear from torsional loading
- Consult Factory on shoe pictured below

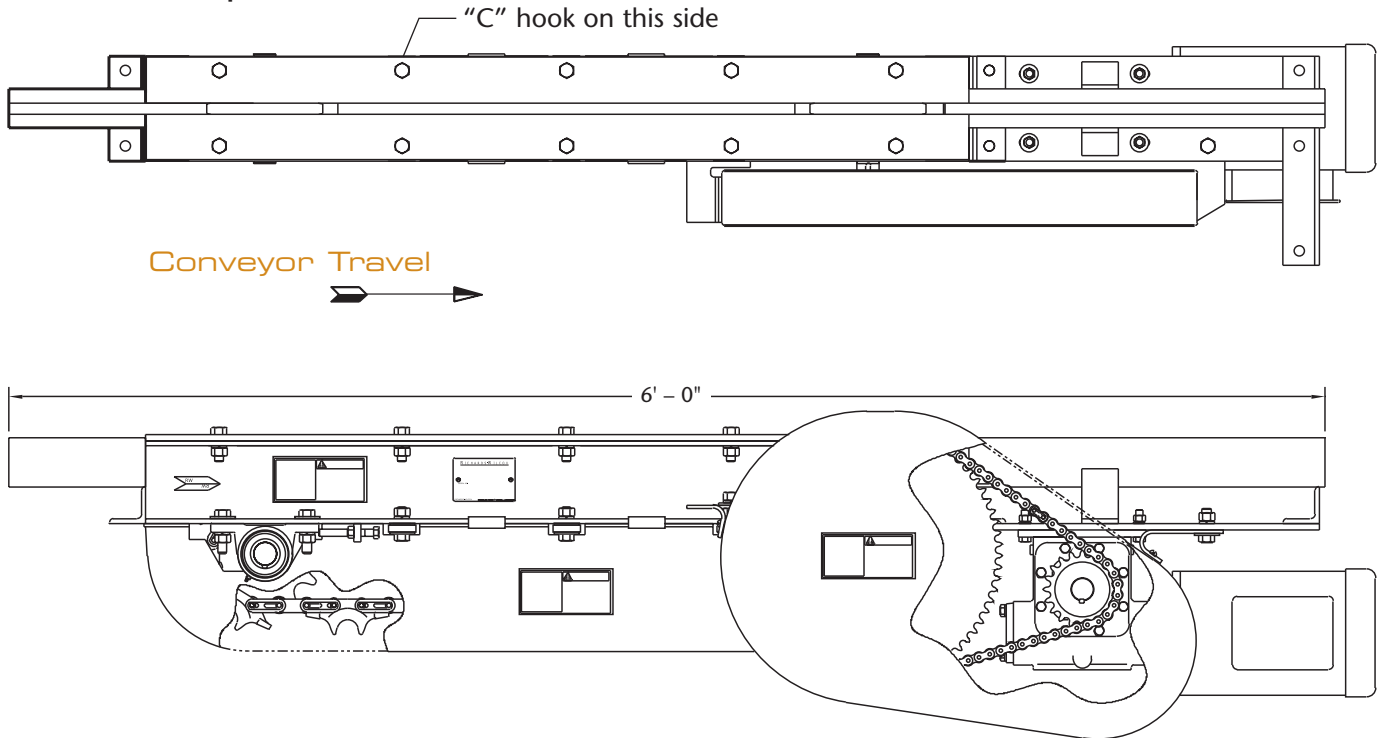
2035.01220 Inverted Pendant

2035.02334 INVERTED INSPECTION SECTION



INVERTED DRIVE UNIT

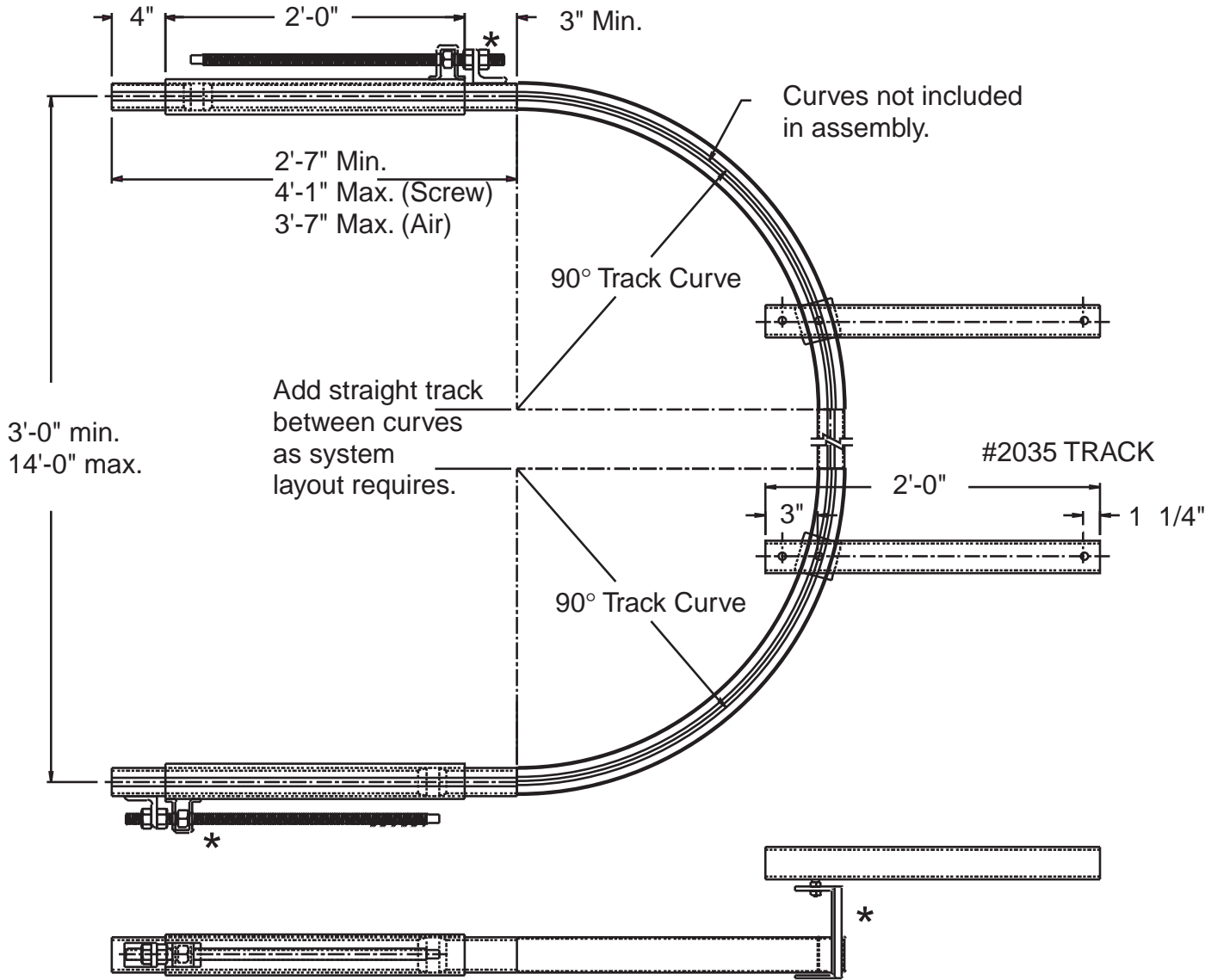
2035.02815— 16 fpm
2035.02816 — 45 fpm



PAINTLINE™ INVERTED ZIG-ZAG

2035.02128 INVERTED SCREW TAKE-UP PACKAGE (1'-6" Travel)

2035.02328 INVERTED AIR TAKE-UP PACKAGE (Not Shown) (1'-0" Travel)



2035.02128 Inverted Screw Take-up Package

NOTE: Parts marked * must be installed on opposite side of the "C" hook.