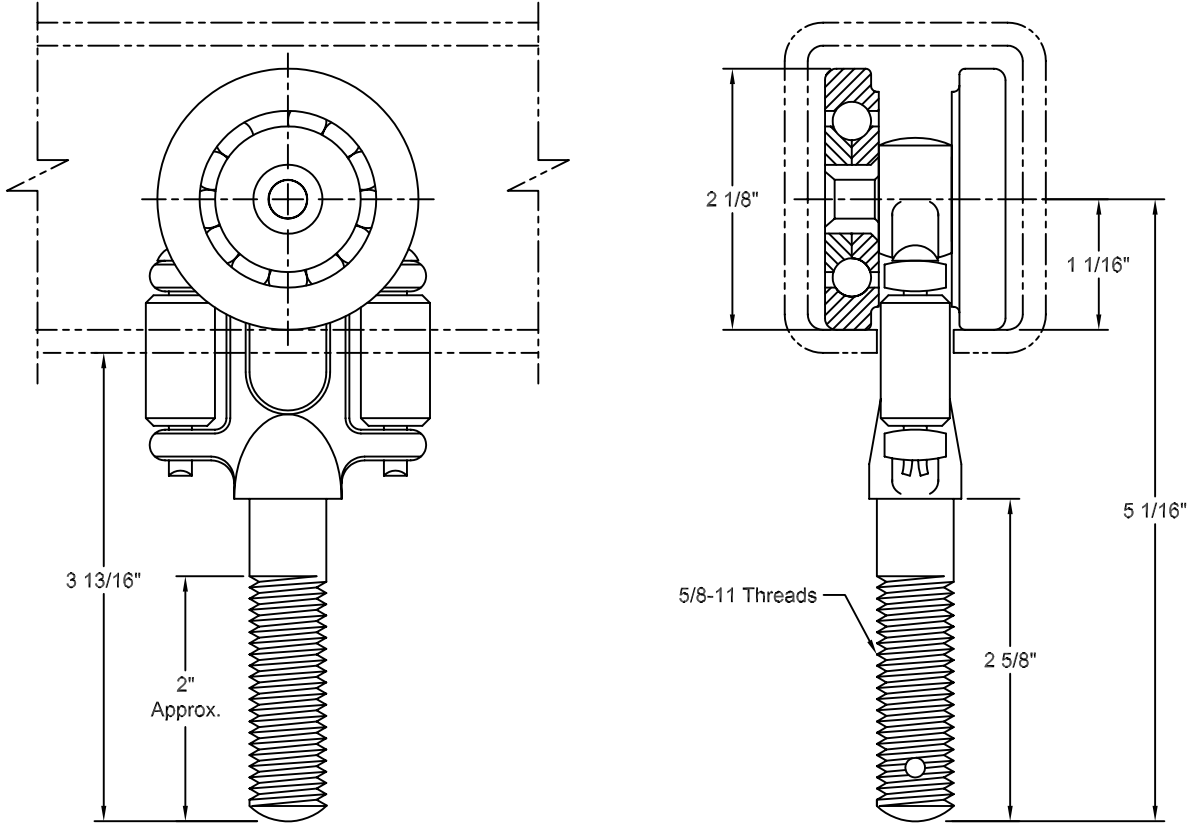


**TWO-WHEEL CARRIER**  
*Part No. 2035.01710*



**DESCRIPTION:** The Two-Wheel Carrier is used for "Safe-Rail" applications. The wheel pendant is dropped forged and equipped with hardened machine steel thrust rollers. The machined wheels are 2-1/8" in diameter and have a full compliment of steel ball bearings. Carriers have a zinc plated finish. Nut and cotter pin are not included, they must be ordered separately when required.

**APPLICATION:** This carrier is intended for light duty, hand push service and for carrying electrical cables, air hoses and similar "tag lines" to service hoists or as portable tool supports for power tools. Two-wheel carriers can also be used when custom fabricated load bars are required to transport longer products or multiple products.

**CAPACITY:** 125 lbs.

**SHIPPING WEIGHT:** 1.5 lbs.

<p><b>RICHARDS - WILCOX</b>          600 S LAKE ST. AURORA, IL 60506          Phone: (630) 897-6951 Fax: (630) 897-6994          Web Site: www.richardswilcox.com</p>	<p>DESCRIPTION:  <b>TWO-WHEEL CARRIER</b></p>			<p>NOTICE:          This drawing in design and detail is the property of Richards-Wilcox, any reproductions of this print and/or design without the written consent of Richards-Wilcox is prohibited.</p>	<p>SR          5</p>
	<p>PART NO.:</p> <p>2035.01710</p>	<p>REV. LEVEL:</p> <p>B</p>	<p>DATE:</p> <p>JUNE 00</p>		