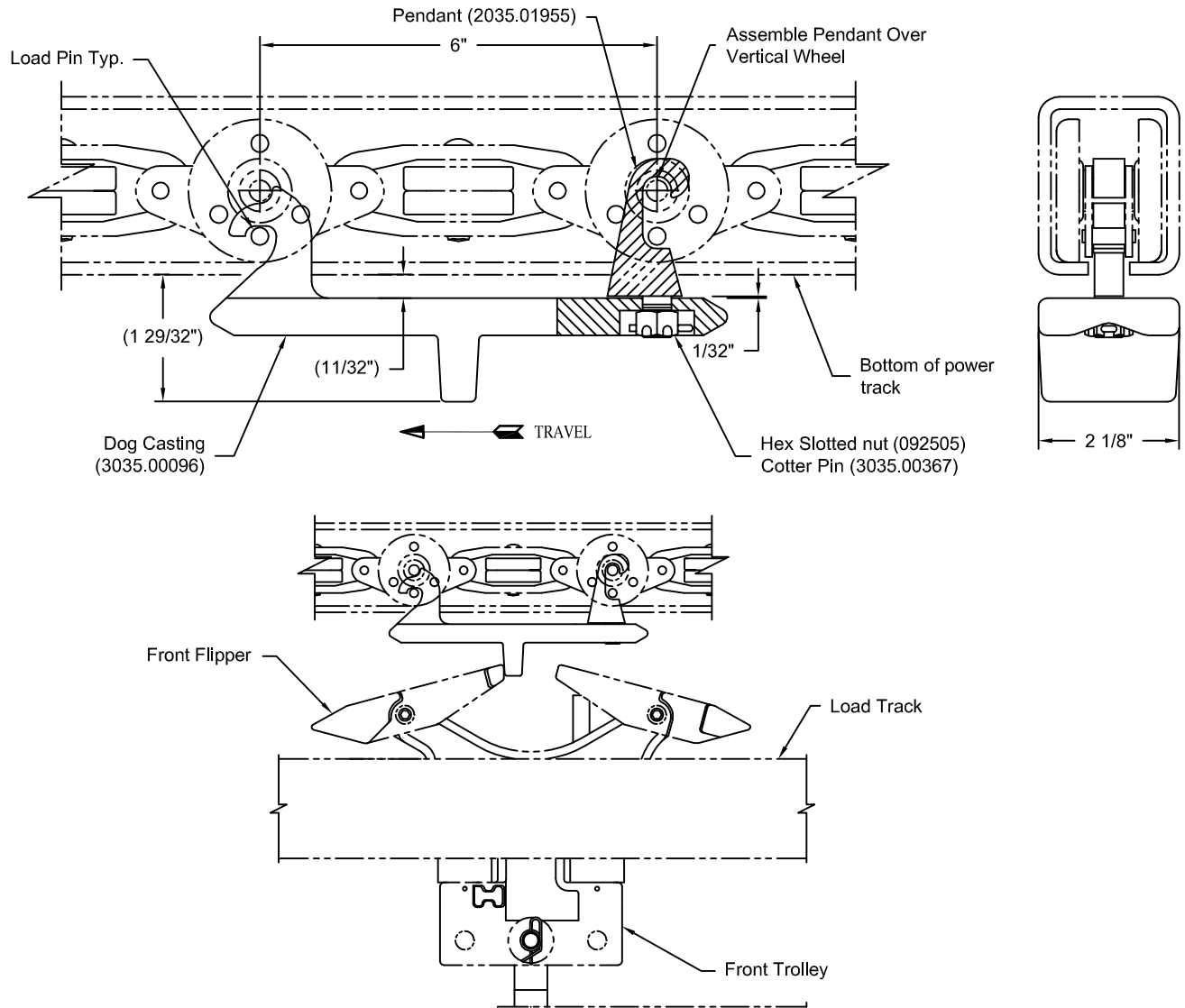


# OVER-WAY PUSHER DOG ASSEMBLY

Part No. 3035.00095



**DESCRIPTION:** The Pusher Dog is composed of a cast bar with a solid front attachment pendant and a loose rear attachment pendant. The parts are assembled to the conveyor chain load pins with a nut and cotter pin. See assembly instructions for additional information.

**APPLICATION:** The Pusher Dog is used in "Over-Way" power and free systems to engage the flipper of the front trolley assembly for movement in the free load bearing channel tracks.

See OW 11 sheet for assembly instructions.

**SHIPPING WEIGHT:** 3 lbs.

File Name: 3035.00095

## RICHARDS - WILCOX

600 S LAKE ST. AURORA, IL 60506  
 Phone: (630) 897-6951 Fax: (630) 897-6994  
 Web Site: www.richardswilcox.com

DESCRIPTION:

OVER-WAY PUSHER DOG ASSEMBLY

PART NO.:

3035.00095

REV. LEVEL:

D

DATE:

SEP. 09

NOTICE:

This drawing in design and detail is the property of Richards-Wilcox, any reproductions of this print and/or design without the written consent of Richards-Wilcox is prohibited.

OW  
10